

**STAMISOL**

**FT 371**

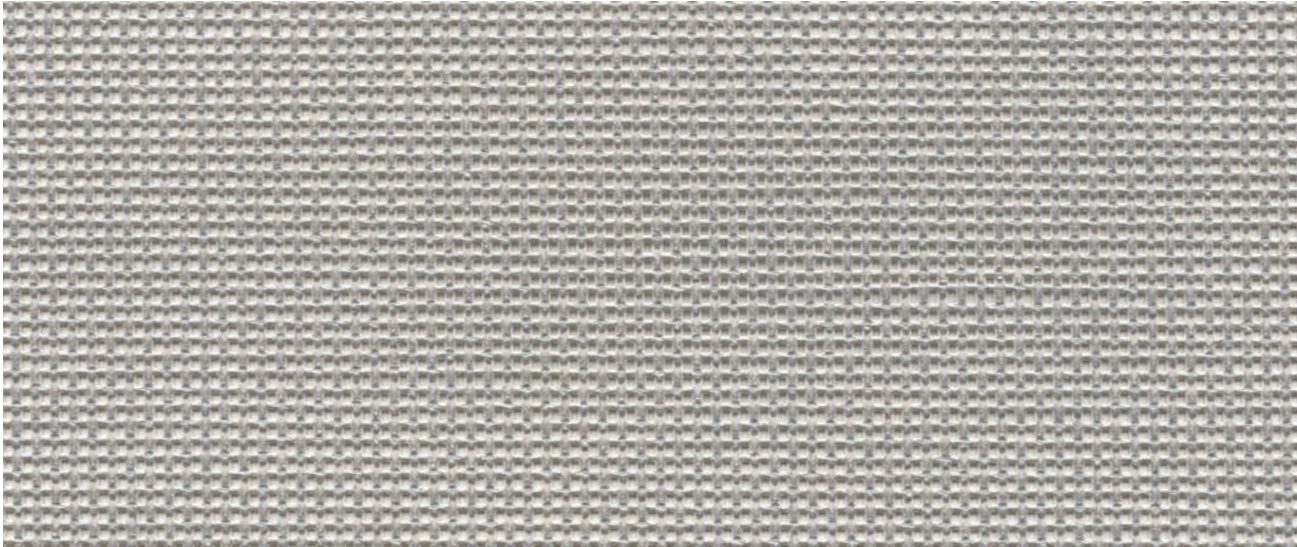


**Serge Ferrari** 



# STAMISOL

FT 371



Alu

371-3048



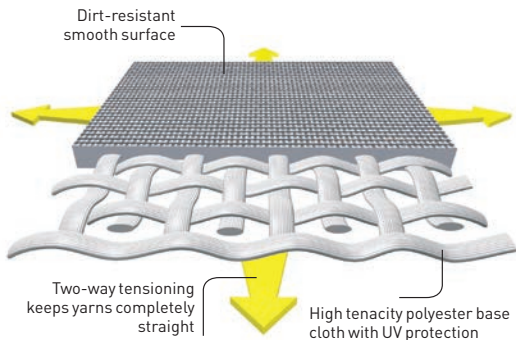
White

371-7900

## Exclusive Précontraint Serge Ferrari® technology



Patented worldwide, Précontraint Serge Ferrari® technology involves keeping the composite membrane under tension throughout the manufacturing cycle.



### Strength characteristics

- Exceptional dimensional stability
- Long-term strength
- Greater coating thickness at the top of the yarns
- Exceptional flatness

### Benefits

- **No deformation during installation and usage: no retensioning long term**
- **Tear resistant**
- **Long-term strength and aesthetic quality**
- **Smooth finish, easy upkeep**



## MAIN FEATURES

- Strength and longevity
- Efficient thermal and solar protection
- Graphic receptive
- Lightweight and 100% recyclable through Texyloop®

## APPLICATIONS

- Facades in new construction or renovation
- Every type of building (tertiary, cultural and industrial, shopping centres, sports complexes, building extensions, etc.)
- Large continuous surfaces or individual panels



Long-term structural strength and aesthetics

## Proven experience for over 15 years

Stamisol FT 371 membranes are a proven building facade material based upon:

- unmatched dimensional stability due to the Preconstraint Serge Ferrari® coating technology: tension and integrity maintained when subjected to the wind, bad weather and possible impacts,
- UV-resistant colours and superior coating surface for long-term aesthetic performance.

Stamisol FT 371 after 12 years of usage maintained:

- over 80% of its original tensile strength.
- its required FR characteristics.

*(tests conducted on a multi-storey car park facade installed in 1994 - photo opposite)*



Living, changing facades

## Freedom of expression and creation

- Lightweight and flexible, Stamisol FT 371 offers great freedom of shape.
- Graphics or projection imaging will allow you to customize or integrate the facade into its environment.
- Quick to install: rapid changing or adding of panels, if building is renovated or extended.



Outward visibility maintained

## Eco-efficiency

Stamisol FT 371 meets your requirements for:

- Thermal and visual comfort:
  - > provides heat protection in summer,
  - > conserves natural light contribution and reduces dazzle.
- Reduction of environmental impacts: lightweight membrane recyclable through Texyloop (see LCA).

# STAMISOL

## FT 371

Technical properties		Stamisol FT 371	Standards
Yarn		1100/2200 Dtex PET HT	
Weight		440 g/m <sup>2</sup>	EN ISO 2286-2
Thickness		0.65 mm	
Width		267 cm	
Physical properties			
Tensile strength (warp/weft)		300/300 daN/5cm	EN ISO 1421
Tear strength (warp/weft)		60/60 daN	DIN 53.363
Adhesion		9 daN/5 cm	EN ISO 2411
Porosity		20 %	
Extreme working temperatures		- 30°C / + 70°C	
Flame retardancy			
Rating		<b>M1/NFP 92-507 • B1/DIN 4102-1 • Method 1/NFPA 701 CSFM T19 • VKF 5.3/SN 198898 • G1/GOST 30244-94</b>	
Euroclass		<b>B-s2,d0/EN 13501-1</b>	
Solar and light properties		ref. 371-3048	ref. 371-7900
Solar Transmission (%) (TS)		30	33
Solar Reflectance (%) (RS)		41	58
Solar Absorption (%) (AS)		29	9
Normal-hemispherical Visible Light Transmission (TVn-h)		28	31
External Solar Factor* (g <sub>tot</sub> e)		0.21	0.22
<b>Environmental impact: LCA (Life Cycle Assessment)</b>			ISO 14041-44
Comparative analysis depending on end-of-life scenarios	Texyloop® Recycling	Incineration	Landfill
Resources depletion	0.011	0.055	0.055
Global warming	0.86	1.87	1.59
Energy consumption	36.3	58.2	58.2
Water consumption	72.2	148.7	148
<b>Management systems</b>			
Quality			ISO 9001
Environmental communication			ISO 14021
<b>Certifications, labels, guarantees, recycling capacity</b>			



\* Type "C" glazing: insulating, slightly emissive double glazing in position 3 (4 + 16 + 4 ; argon-filled - g=0.59 - U=1.2)

The technical data above are average values with a +/- 5% tolerance.

The buyer of our products is fully responsible for their application or their transformation concerning any possible third party. The buyer of our products is responsible for their implementation and installation in compliance with standards, codes of practice and safety regulations in force in destination countries.

To ensure warranty effectiveness, refer to warranty certificate concerned available on demand.

The values quoted above represent results of tests performed in compliance with common design practices and are provided for information only to enable customers to make the best use of our products. Our products are subjects to evolutions due to technical progress, we remain entitled to modify the characteristics of our products at any time. The buyer of our products is responsible to check that the here above data are still valid.

### TOOLS AND SERVICES

- LCA available on request
- Document and photo libraries: [www.sergeferrari.com](http://www.sergeferrari.com)

#### → Contact

- Headquarters:  
+ 33 (0)4 74 97 41 33
- Your local representative:  
[www.sergeferrari.com](http://www.sergeferrari.com)

#### → TEXYLOOP®

- The Serge Ferrari operational recycling chain
- Secondary raw materials of high intrinsic value compatible with multiple processes
- A quantified response to combat depletion of natural resources

[www.texyloop.com](http://www.texyloop.com)

[www.sergeferrari.com](http://www.sergeferrari.com)

**Serge Ferrari**