

Low
Odor

High
Quality

Utmost Balance

High
Speed



Color Painter™ M-64s

- L C I S M o d e l -



Revolutionizing the low-odor eco solvent inkjet printers. High-speed print engine plus low-odor WX ink achieve unmatched performance.

Low
Odor

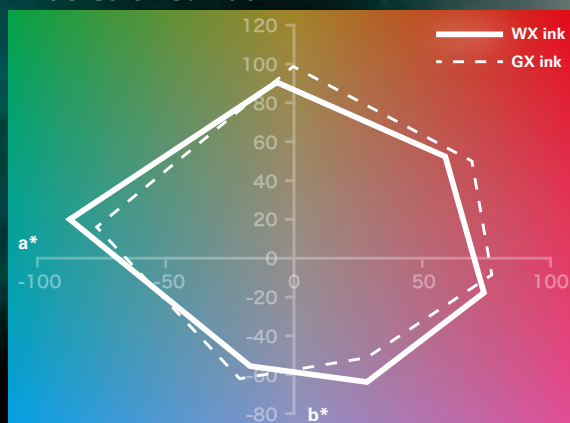
High Performance with Low Odor



**Low-Odor and
Eco Solvent WX Ink**

The newly-developed eco solvent WX inks offer a wide color gamut, high vividness, high density, excellent outdoor durability and low running costs in addition to the low level of odor. Overall performance of WX inks meets the customers demand for higher productivity and better workplace environment.

Wide Color Gamut



WX inks deliver vivid and rich colors with the same wide color gamut as GX inks.



NEW New Air Flow and Large Heater

NEW Large Capacity Ink System (LCIS)

NEW High-speed and Reliable Print Heads

DDP - Dynamic Dot Printing Technology

NEW On-Carriage Ionizer

Enhanced SNM2 - Smart Nozzle Mapping

Enhanced SP4 - Smart Pass Technology

NEW Take-up System with Slide Mechanism

NEW Media Lifter

NEW Automatic Print Adjustment

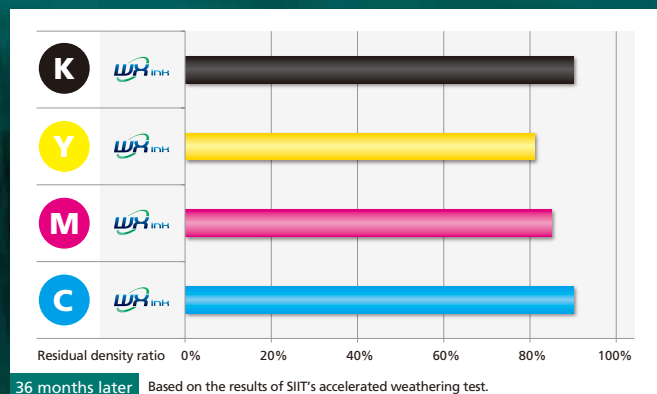
Enhanced Advanced CP_Manager Software

High Speed Eco Solvent Printer

ColorPainter™ M-64s

- LCIS Model -

High Outdoor Durability



Even with its low odor characteristic, WX inks boast excellent outdoor durability.

* SIIT does not guarantee outdoor durability.

High Density



The WX inks achieve high-density colors and details in dark areas. The M-64s meets customers' needs for sharp, clear and bright backlit signs.



Enlarged image of high density area



High Print Quality with Low Odor



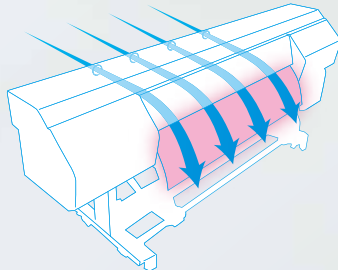
Large Capacity Ink System (LCIS)



Designed to maximize your print productivity, the ColorPainter M-64s LCIS model comes with 4.5-liter large-capacity ink reservoir per color to support continuous high-volume printing. The M-64s automatically detects the remaining ink level and notifies you with a warning message and sound when the ink level is low. Ink reservoir can be refilled by replacing ink bottles without interrupting print jobs.



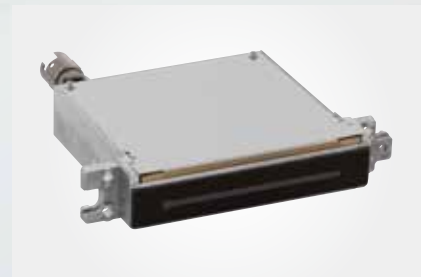
New Air Flow and Large Heater



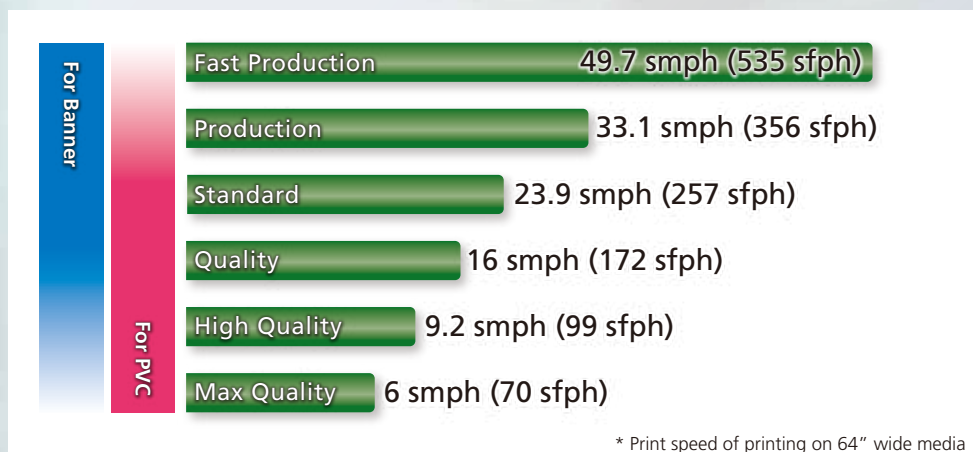
The air flow inside the printer has been redesigned for faster ink drying. The air flow system brings air from the rear of the printer and then blows it along the front cover out of the printer. This air flow coupled with a large heater makes it possible to quickly dry even low odor inks.



High-Speed and Reliable Print Heads



The ColorPainter M-64s features the new print heads that realize a maximum print speed of 49.7 m²/h. Guard plates attached the print heads add more reliability and robustness to the ColorPainter M-64s.



Integrating advance technology to maximize the performance of WX inks, the ColorPainter M-64s delivers unmatched productivity and quality while reducing the impact on the environment.

Easy
Operation

User-Friendly
Features



Take-Up System with Slide Mechanism

The new media take-up unit offers a new loose mode to reduce stress on the print surface and supports reliable unattended printing. The ColorPainter M-64s also comes with a new slide-out mechanism allowing users to easily load and unload media.



Automatic Print Adjustment

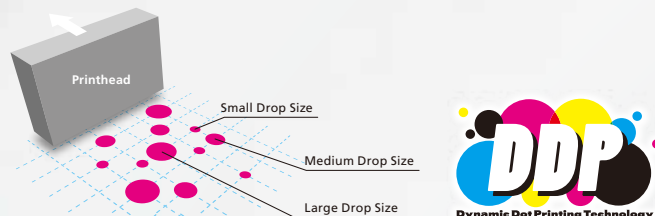
The ColorPainter M-64s includes new optical sensors that automatically perform both media advance and bi-directional position adjustment. The operator does not have to make complicated manual adjustment when a new media has been installed or when the print mode has been changed. This new automatic print adjustment ensures high quality printing even for first time users.





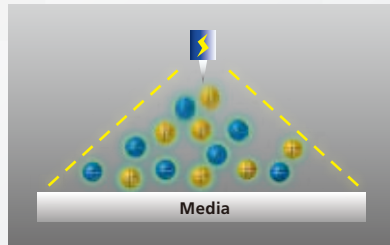
High Productivity with Low Odor

DDP - Dynamic Dot Printing Technology



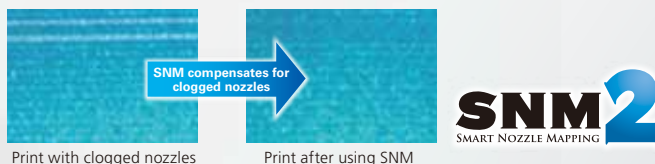
Dynamic Dot Printing Technology controls and optimizes dot size to produce rich, bold and glossy colors with fine details. DDP also creates high density printing without any loss in speed, giving the ColorPainter M-64s backlit film capabilities.

NEW On-Carriage Ionizer



Static electricity on print media is one of the major factors that cause printing defects. The built-in on-carriage ionizer neutralizes static electricity and eliminates static related print issues, even in a low humidity environment.

Enhanced SNM2 - Smart Nozzle Mapping



SIIT's unique nozzle compensation function evolves to the next level. Smart Nozzle Mapping re-maps clogged nozzles so you can continue to print with perfect image quality. SNM2 can significantly reduce downtime and boost your productivity.

Enhanced SP4 - Smart Pass Technology

SP4 significantly reduces graininess in halftone areas and produces smooth skin tones.



With improved algorithms and masking technology, the 4th generation of Smart Pass Technology now more effectively reduces overspray and eliminates pass-to-pass banding. Optimizing the effect for each print mode, SP4 brings superb image quality to versatile applications.



NEW Media Lifter

The ColorPainter M-64s comes with the new media lifter (jack-up function). It assists easy loading and unloading of heavy media.



Enhanced Advanced CP_Manager Software

Developed specifically for the ColorPainter printers, CP_Manager, the bundled controller software, allows operators to operate printers from a PC, tablet or smartphone. Operators can communicate and manage the M-64s by email and Twitter through CP_Manager.





High Speed Eco Solvent Printer

ColorPainter™ M-64s
- LCIS Model -**IP-6620 (ColorPainter M-64s LCIS model)**

Print Head	High Frequency drop on demand piezo
Number of Nozzles	508 nozzles/head
Maximum Resolution	900 dpi
Maximum Media Width	1,626 mm (64")
Maximum Print Width	1,616 mm (63.6")
Printing Speed	3.5 to 49.7 smph (38 to 535 sfph)
Media Weight	Up to 50 kg (110 lbs)
Maximum Media Diameter	220 mm (8.7")
Margin Size	5 mm (1/5") on each edge (with rolled media, without edge guards)
Ink Type	Low-Odor and Eco Solvent: WX
Color	6 (C, M, Y, K, Lc, Lm)
Ink Bottle Capacity	1 liter per color (2 bottles/box)
Ink Reservoir Capacity	Maximum 4.5 liters/color
Media	PVC, Banner and other media designed for solvent printers.
Heater	3-way built-in heaters (Pre, Print, After)
Take-up Modes	Loose/Outer, Tension/Inner, Tension/Outer
Interface	USB 2.0
Power Source	200 to 240 VAC, 12A, 50Hz/60Hz
Power Consumption	2,880W or less
Operating Environment	15 - 30 °C (59 - 86 °F), 30 - 70 % RH (no condensation)
Storage Environment	5 - 35 °C (41 - 95 °F), 10 - 80 % RH (no condensation)
External Dimensions	3,095 (W) x 935 (D) x 1,247 (H) mm (122" x 37" x 49")
Weight	321 kg (708 lbs) or less without media and inks

Option

IP6-010	Cutter unit (64")
IP7-013	Exhaust Attachment
IP5-261	2" flange

Consumables

IP6-241	WX Ink Yellow (2 bottles/set)
IP6-242	WX Ink Magenta (2 bottles/set)
IP6-243	WX Ink Cyan (2 bottles/set)
IP6-244	WX Ink Black (2 bottles/set)
IP6-245	WX Ink Light cyan (2 bottles/set)
IP6-246	WX Ink Light magenta (2 bottles/set)

*Fast. Precise. Reliable.*

Focusing on **"Time"**, Seiko I Infotech Inc. has been dedicated to pursuing the ideal for wide format printers for sign and graphics professionals. **"Color On Time"** represents our credo for **"Manufacturing"** with **"Fast"**, **"Precise"** and **"Reliable"** as the three key elements. We strive to develop and manufacture products and services that benefit customers' **"Time"**.

SUPPORT

Seiko I Infotech provides customer service through its worldwide distributor network.

Specifications are subject to change without notice. Please contact your local authorized SIIT product distributor.
ColorPainter is a trademark of Seiko I Infotech Inc. All other trademarks are the property of their respective owners.

**Seiko I Infotech Inc.****Headquarters**

8, Nakase 1-chome, Mihama-ku, Chiba-shi, Chiba 261-8507, Japan

Telephone: +81-43-211-1363

Takatsuka Office

563, Takatsukashinden, Matsudo-shi, Chiba 270-2222, Japan

Telephone: +81-47-392-2082

SEIKO
SEIKO HOLDINGS GROUP**INFORMATION** — <http://www.seiko-i.com>