

Wide Format Printer

OKI



UNCOMPROMISED PRINT QUALITY



ColorPainter™ H3-104s

SUPER FAST
SUPER QUALITY
SUPER WIDE



The ColorPainter H3-104s is engineered for fast print speed and rugged durability while maintaining superior image quality and color density to meet the requirements of professional-quality graphics in mid range, high-volume environments. At a maximum print width of 104 inches together with low-odor SX eco-solvent inks, it can produce a broad range of indoor and outdoor print applications even in odor-sensitive environments.

FACTS AND KEY FEATURES

QUICK SPECS Japan Model

Maximum Media Size	104" width, 3-inch core
Ink	SX eco-solvent, low-odor, C, M, Y, K, Lc, Lm, Gy, LGy
Typical Print Speed	37.7 m ² /h / 6-pass
Max Print Speed	56.6 m ² /h / 4-pass
Maximum Resolution	900x900 dpi
Printhead	8 Piezo

Optimum Image Quality

SX inks retain deep, rich color and clarity in dark areas, for signs and graphics with incredible visual impact and excellent outdoor durability.

and enhanced with a host of innovative features that streamline operation, boost productivity and simplify operator input.

Exceptional Print Speed

Enhanced print technologies combined with high-density SX inks and industrial print heads result in exceptional print speed with optimum image quality.

Proven Reliability & Productivity

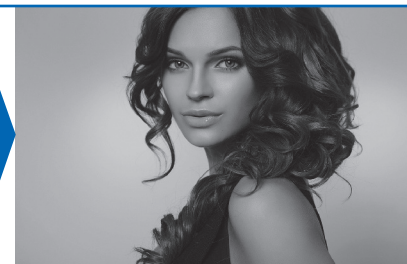
Purpose-built for the rigors of high-volume print environments

SX Ink – Gray & Light Gray

Create real monochrome images without color shifts and easily produce smooth gradation, light shadows and metallic texture. Large capacity ink bags (1,5 liter/1,500 ml) and sub-tank system allow non-stop printing.



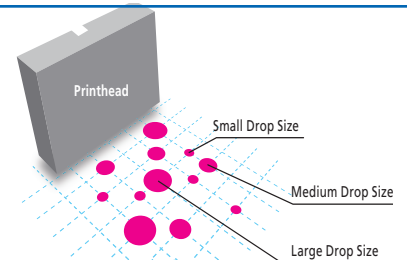
Without Gray or Light Gray (Reddish)



Gray + Light Gray (Real Monochrome)

Dynamic Drop Printing (DDP) Technology

Controls and optimizes dot size and density for each print mode, which accentuates fine details and delivers rich, bold and glossy colors even at high speeds and lower resolution.



Smart Nozzle Mapping (SNM) Technology

Re-maps clogged nozzles to reduce downtime, extend life of the printhead and boost productivity.



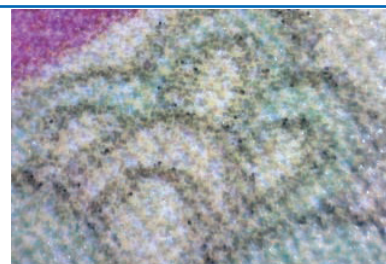
Smart Pass (SP) Technology

Eliminates pass-to-pass banding for improved print quality at high speeds and on various substrates.

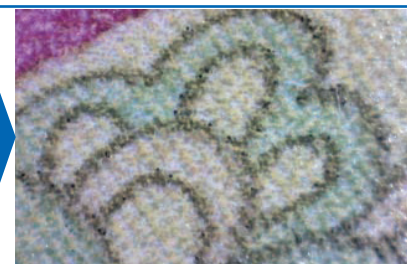
Double-sided print capability and optional mesh print ink tray enables printing on mesh banner without a liner.

Auto Print Adjustment

Optical sensors automatically perform both media advance and bi-directional position adjustment – in less than four minutes.



Bad Calibration



Good Calibration

CP Manager

Allows you to monitor and operate the printer from a PC, tablet or smartphone.



For More Information:

OKI EUROPE LTD. WIDE FORMAT DIVISION

Siemensstraße 9, D-63263 Neu-Isenburg,
Germany
Phone +49 6102 297 400
www.okieurope.com