

**OKI**



**THE NEW CONVENIENT STANDARD OF QUALITY**

ColorPainter™ **E-64s**



# COLORPAINTER E-64s THE HIGH-PRECISION PROFESSIONAL

**SX** ink

+

Color Painter M-64s

=

**Eco Ink**

Low odour  
Outstanding outdoor durability  
Wide colour gamut with high density

**Fast**

High speed print heads  
Safe Scanning System  
Short ink dry-time

**Precise**

Superior image quality  
Smart nozzle mapping  
Fine print mode

**Reliable**

Reliable winding system  
2 year warranty  
Smart Take-up unit

**Easy  
Operation**

Automatic adjustments  
CP-Manager



OKI

Color Painter E-64s



# COLOR PAINTER

ST, PRECISE, RELIABLE

# SETTING A NEW STANDARD IN SO MANY WAYS

**1** Low odour eco solvent SX ink

**2** Wide colour gamut

**3** Outstanding outdoor durability

**4** High Density

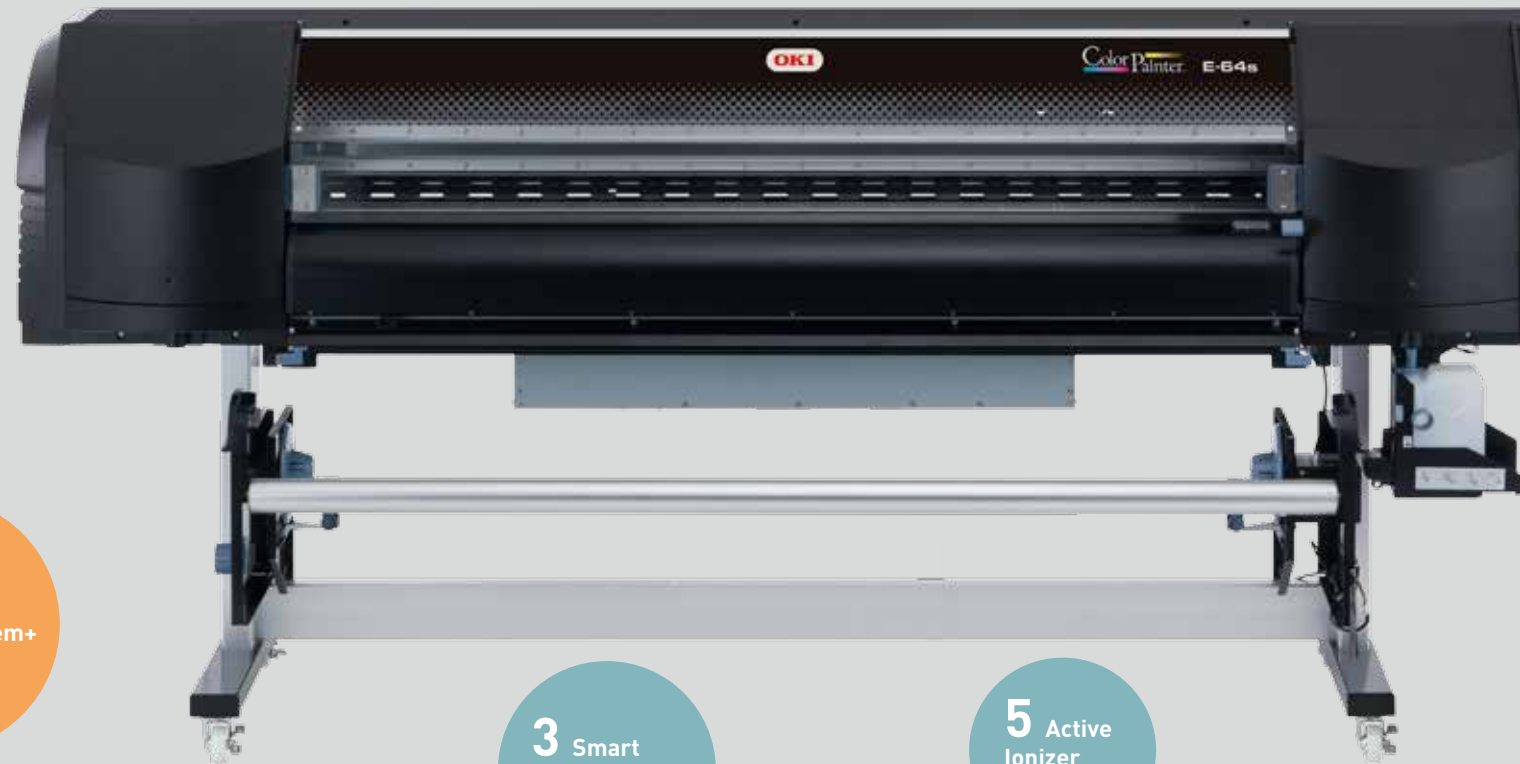
**2** Optimised Air Flow System+ Heater

**1** High Speed Print Heads

**3** Safe Scanning System

**1** Smart Pass Technology 4 (SP4)

**2** Dynamic Dot Printing Technology



**3** Smart Nozzle Mapping 3 (SNM 3)

**5** Active Ionizer (optional)

**1** Media  
Take-up System

**3** 2 Year  
Warranty

**2** Automatic  
washing system  
for print heads

**4** Premium  
manufactured  
printer

**1** Automatic  
printer adjustment

**4** Fine  
Print Mode

**2** CP-Manager

## AT A GLANCE

### SPECIFICATION

Model	IP-5630-00, ColorPainter E-64s
Print Head	Industrial High-Frequency Dynamic Drop-On-Demand Piezo Print-Head
Number of Nozzles	256 nozzles/head – each colour
Maximum Resolution	1080 x 1080 dpi
Visual Resolution	photorealistic printout
Maximum Media Width	1.626mm (64")
Maximum Print Width	1.616 mm (63,6")
Printing Speed	1.9 to 22,9 m2 (20 to 246 sfph)
Media Weight	Up to 24 kg (110 lbs)
Maximum Media Diameter	180mm (7")
Margin Size	5 mm (1/5") on each edge (with rolled media, without edge guards)
Ink Type	Eco-Solvent SX ink with Greenguard Gold certification
Colour	6 (CMYK, Lc, Lm)
Maximum ink capacity	500 ml. per colour
Media	Vinyl, banner, paper, blueback, backlit, canvas, technical textiles, etc.
Heater	3-way built-in heaters (Pre-, Print-, After-Heater)
Take-up Modes	tension or loosen, inside or outside winding
Interface	USB 2.0
Power Requirements	120 VAC, 50/60 Hz, 12a/220 to 240 VAC, 50hz/60hz, 6a
Power Consumption	Start-up 1,350 W or less, stand-by 35W or less
Operating Environment	15 – 30 °c (59 – 86 °f), 30 – 70 % rh (no condensation)
Storage Environment	5 – 35 °c (41 – 95 °f), 10 – 80 % rh (no condensation)
External Dimensions	2.830 (W) x 830 (D) x 1.255 (H) mm, (112" x 33" x 50")
Weight	228 kg (502 lbs.) or less without media and ink
Software	Onyx Rip Center Special Edition included

### OPTIONS

Cutter unit	With practical fixing points for a perfect horizontal cut after printing
Active Ionizer	Automatically neutralises static electricity
2" Flange	Media for rolls with a core diameter of 2 inches

Eco Ink

# LOW-ODOUR ECO SOLVENT INK FOR VERSATILE APPLICATIONS

Very fast print engine plus ECO SX ink achieve unmatched performance for indoor and outdoor applications.

## 1 Low odour ECO solvent SX ink

SX ink covers the full range of long-life outdoor signage and high-quality indoor graphics. In addition to its low running costs, SX ink carries the Nordic Ecolabel and a Greenguard Gold certification.

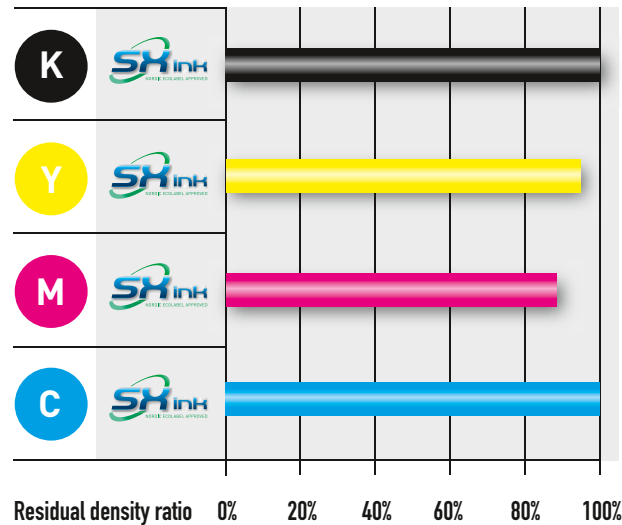
## 2 Wide colour gamut

With its wide colour gamut, it is possible to print the widest range of standard RAL or Pantone colours, especially in the important red and blue tones.



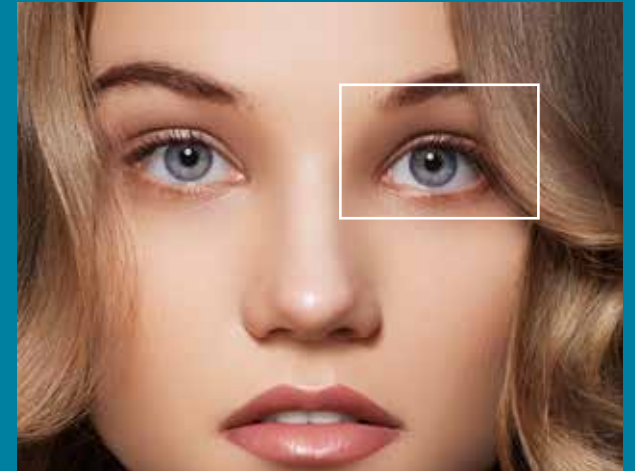
## 3 Outstanding outdoor durability\*

SX ink by OKI has the same familiar high-class performance as its mild solvent GX ink. SX ink simultaneously offers high-speed printing and outstanding image quality through precise drop-control, high scratch-resistance and good chemical durability. It offers UV stability of 3 years+ without lamination. It is also approved in the 3M MCS Warranty programme and the Avery ICS Warranty programme which offer much longer extended outdoor warranties.



36 months later

\* Based on the results of accelerated weather test by OKI. OKI does not guarantee outdoor durability.



## 4 High Density

The SX ink achieves high-density colours and details in dark areas. It meets the customer's demand for sharp, clear and bright signs especially for backlit applications.

Fast

# SMART, RELIABLE FUNCTIONALITY FOR EASY PRINTING

ColorPainter E-64s provides unmatched productivity and quality while reducing impact on the environment.



## 1 High-Speed Print Heads

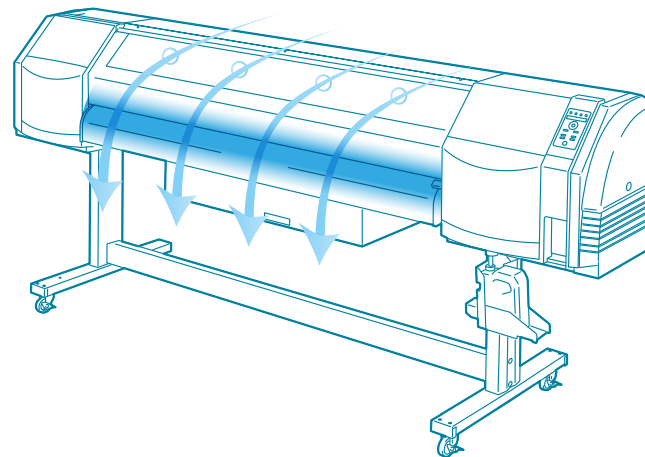
Industrial high-frequency greyscale print heads realise a maximum print speed of 22,9 m<sup>2</sup>/h. Even production in High Speed Mode does not lose density. For special applications it is possible to increase density without reducing print speed.

## 2 Optimised active air flow system+ large heater

The air flow inside the printer has been redesigned for faster ink drying. The active air flow system brings air from the rear of the printer and blows it along the front cover out of the printer. This air flow coupled with a large heater makes it possible to dry our low odour ECO SX ink quickly.

## 3 Safe Scanning System (Print Head Protection)

This scanning system is constantly checking the media for wrinkles. It allows the operator to quickly pause the job, correct the medium and then resume the print job without cancellation. This will help the operator to save time, ink and media.



Banner	Fast Produktion	22,9 smph [246 sfph]
	Produktion	15,0 smph [161 sfph]
	Standard	10,9 smph [117 sfph]
	Quality	7,2 smph [77 sfph]
	High Quality	4,2 smph [45 sfph]
	Max Quality	2,7 smph [29 sfph]
	Fine Details	1,9 smph [20 sfph]
Backlit HD		
Vinyl		

Print speed of printing on 64" wide media

Precise

# HIGH-PRECISION TECHNOLOGY TO MAXIMISE PRINT QUALITY

Innovative and unique technologies implemented in firmware and hardware



## 1 Smart Pass Technology 4 (SP4)

The special dot control algorithm of SP4 controls the ink in order to generate the ideal drop-size and produce a superb quality of image. This makes the printer perfect for both, high-quality indoor and long-life outdoor applications and effectively eliminates banding without any loss in quality and speed.

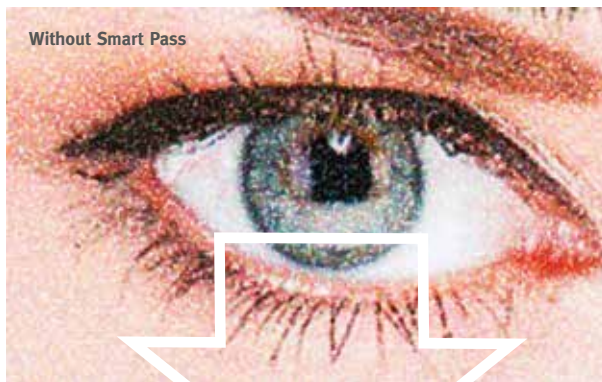


## 2 Dynamic Dot Printing Technology

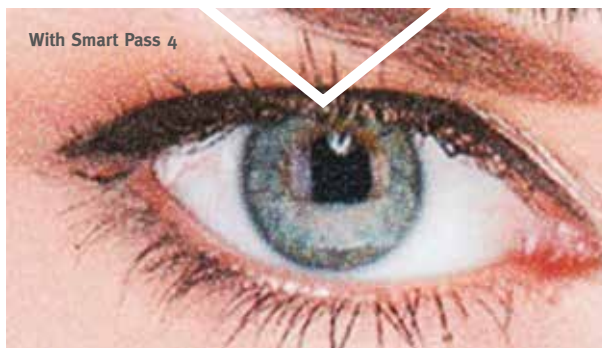
DDP controls and optimises dot-size and dot-density to make consistently rich bold glossy colours with fine details. It also facilitates high-density printing without detail and speed loss. This is ideal for backlighting applications.

## 3 Smart Nozzle Mapping 3 (SNM3)

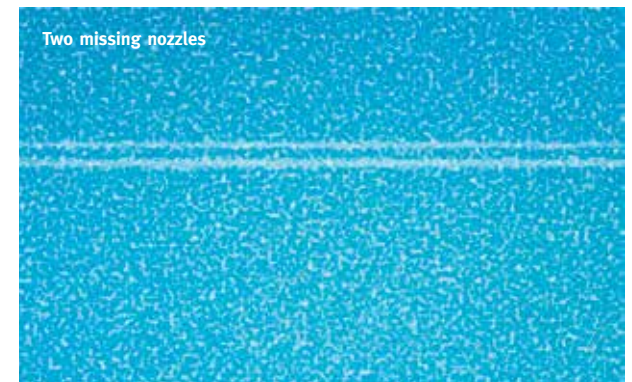
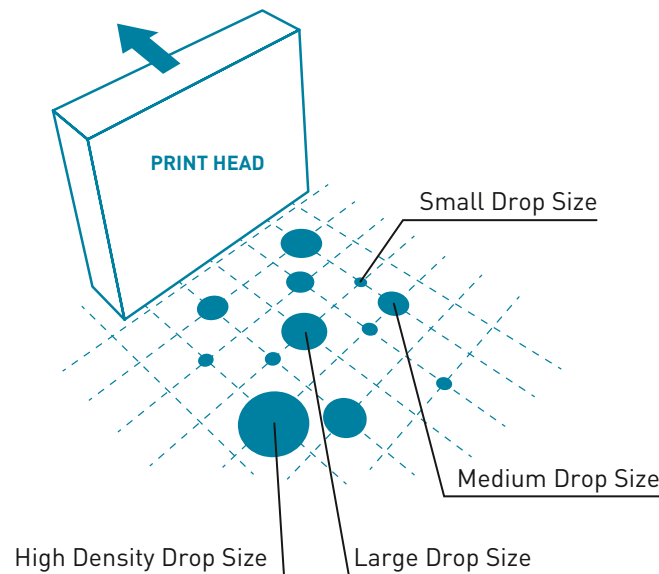
A new dot control algorithm has up-graded the performance of the Smart Nozzle Mapping function, compensating missing dots precisely when nozzle clogging occurs. It compensates up to 10 nozzles per print head without restricting the print quality or speed. The mapping can be done manually or automatically.



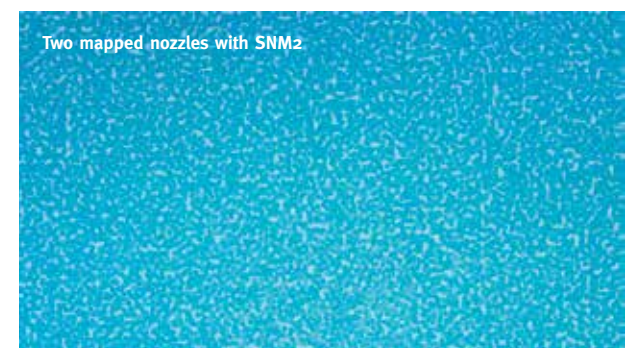
Without Smart Pass



With Smart Pass 4



Two missing nozzles



Two mapped nozzles with SNM2

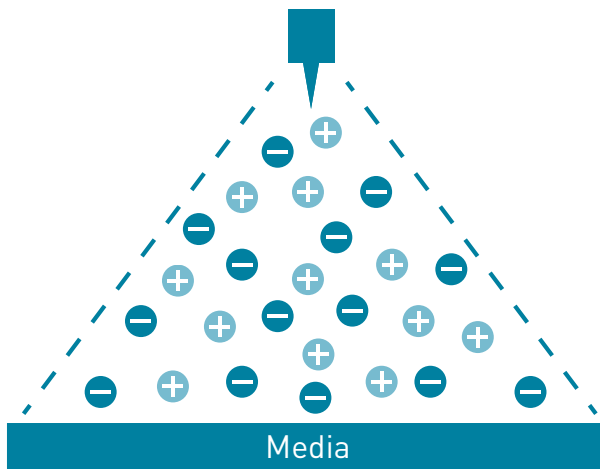


#### 4 Fine Print Mode

This new print mode offers very precise print results. Especially for very thin lines and smallest details. Printed characters up to 2 point size are easily legible.

#### 5 Active Ionizer (Optional)

Static electricity can cause print defects on special indoor media which are electric static-sensitive. The active on-carriage ionizer neutralises static electricity on the media, reducing static-related print issues – even in low humidity environments. It helps to keep printing consistent all year-round



#### Print on Photo Paper

- photorealistic printout
- huge colour gamut
- deep-view effect with small details
- printed on E-64s

Reliable

## EXCELLENT, ROBUST CONSTRUCTION

Highly-advanced engineering expertise in mechanical, electronic and firmware development ensure extraordinary reliability.

### 1 Media take-up system

The winding system with the take-up unit offers a tension mode and a loose mode to reduce stress on the print surface and supports reliable unattended printing. The system provides feeding for media and precise winding of the take-up unit.



### 2 Automatic washing system for print heads

A “print head washing system” automatically moistens the head’s surface with a sponge first and then cleans it thoroughly with two wipers.



### 3 Warranty

We provide a warranty of 2 years on hardware and print heads, without any nozzle shot restriction.

**Fast - Precise - Reliable = Ready for production!**

### 4 Premium manufactured printer

OKI printers stand for sturdy, reliable and precise construction, made for production environments and high quality awareness.



Easy  
Operation

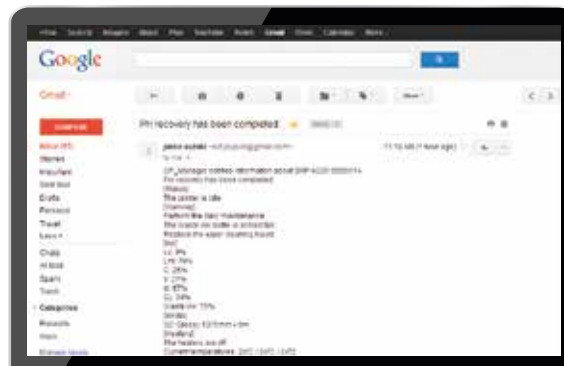
## EASY TO OPERATE WITH USER-FRIENDLY FEATURES

### 1 Automatic printer adjustments

The printer has optical sensors that automatically perform both media advance and bi-directional position adjustment. The operator does not have to make complicated manual adjustment when new media is installed or when the print mode has been changed. This automatic print adjustment ensures high quality printing even for first time users.

### 3 CP-Manager

Developed specifically for the ColorPainter printers, CP-Manager, the bundled controller software, provides the operator printing status, error or warning messages and offers easy access to printer settings and printer-parameters. Everything is made easy, whether via PC, mobile device or twitter.



#### Label & Stickers

- Excellent colour density
- Perfectly-readable 2 point characters
- Printed on E-64s

# OKI



©2017 Oki Europe Ltd. Oki Europe Ltd. is part of the Oki Electric group of companies. Version 1.0 01/2017 Specification subject to change without notice. ColorPainter is a trademark of Oki Data Infotech Corporation. All trademarks acknowledged.



OKI EUROPE LTD.  
WIDE FORMAT DIVISION  
Siemensstraße 9  
D-63263 Neu-Isenburg,  
Germany  
WFDinfo@okieurope.com  
www.okieurope.com